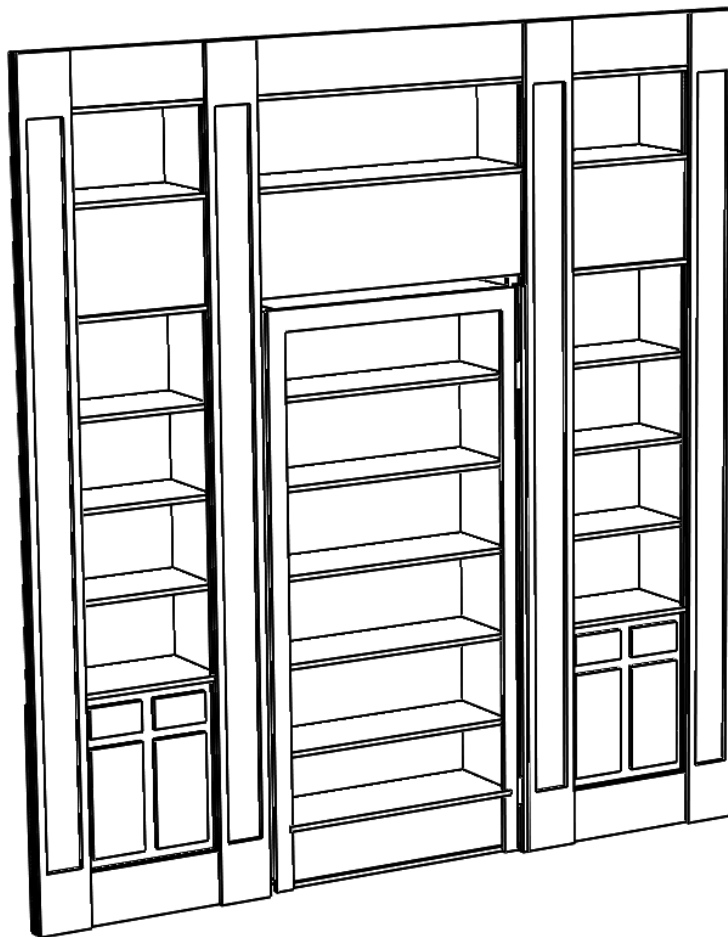




Library Hidden Door Kit (LBH)

RPFAB Doll House Accessory Kit - Assembly Guide



The latest version of this document can be found at:
<https://rpfab.com/product-support/>



RPFAB Doll House Kit Assembly Guide – Library Hidden Door (LBH)

Revised 8/9/2021
Page 2 of 12

Thank you for your purchase. Now it's time to get your creative ideas flowing and put together your Book Nook Diorama!

If you have experience with building chip board models:

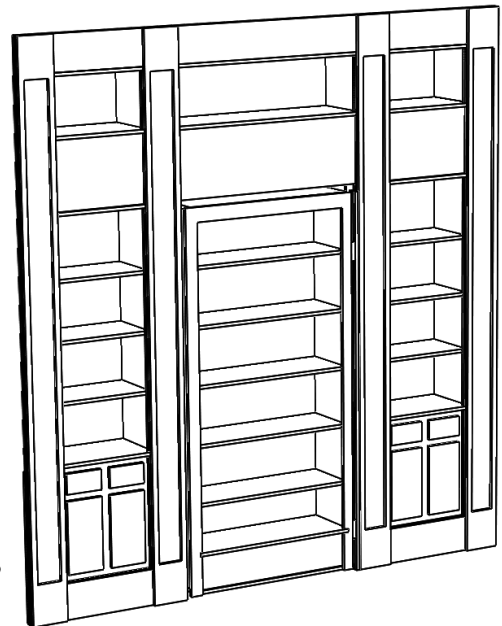
There are different ways to assemble and use this kit so feel free to deviate from this guide if your design requires it! Before decorating and gluing things up, I recommend a quick pre-assembly and to mark the panels with a sketch and notes to remember which side is up, and forward.

If you've never assembled a chip board model before, here are some general tips:

The parts are precision laser cut and should fit together very well. I like to use "Tite Bond 2" wood glue available in most hardware and home stores. I also like to use a bottle with a fine tip for precision application. You will have about 1-2 minutes of good working time with Tite Bond 2 and you can handle the parts after about 1 hour. During assembly, I also like to have a tape dispenser available for one handed use. I use tape to secure the panels while the glue dries, then peel the tape off any visible surfaces as soon as possible.

The edges will have some black charring and an odor from the cutting process. Using a 50% solution of vinegar and water, a quick wipe with a lightly damp rag will remove most of the carbon and reduce the odor. If you find the odor offensive, allow the parts to air out for a few days. Don't soak the chip board.

If you are planning to paint with a light color, it is recommended to wipe and prime the chipboard. Paint with several light coats instead of one heavy coat to prevent material swelling and to get a more vibrant color.



Our book nook kits are made with high quality chipboard. While we inspect and try to catch flawed pieces, it's always possible that there will be a few panels that get through. If you need anything replaced, please contact me at rich@rpfab.com.

With that overview in mind, let's go to the step by step instructions!

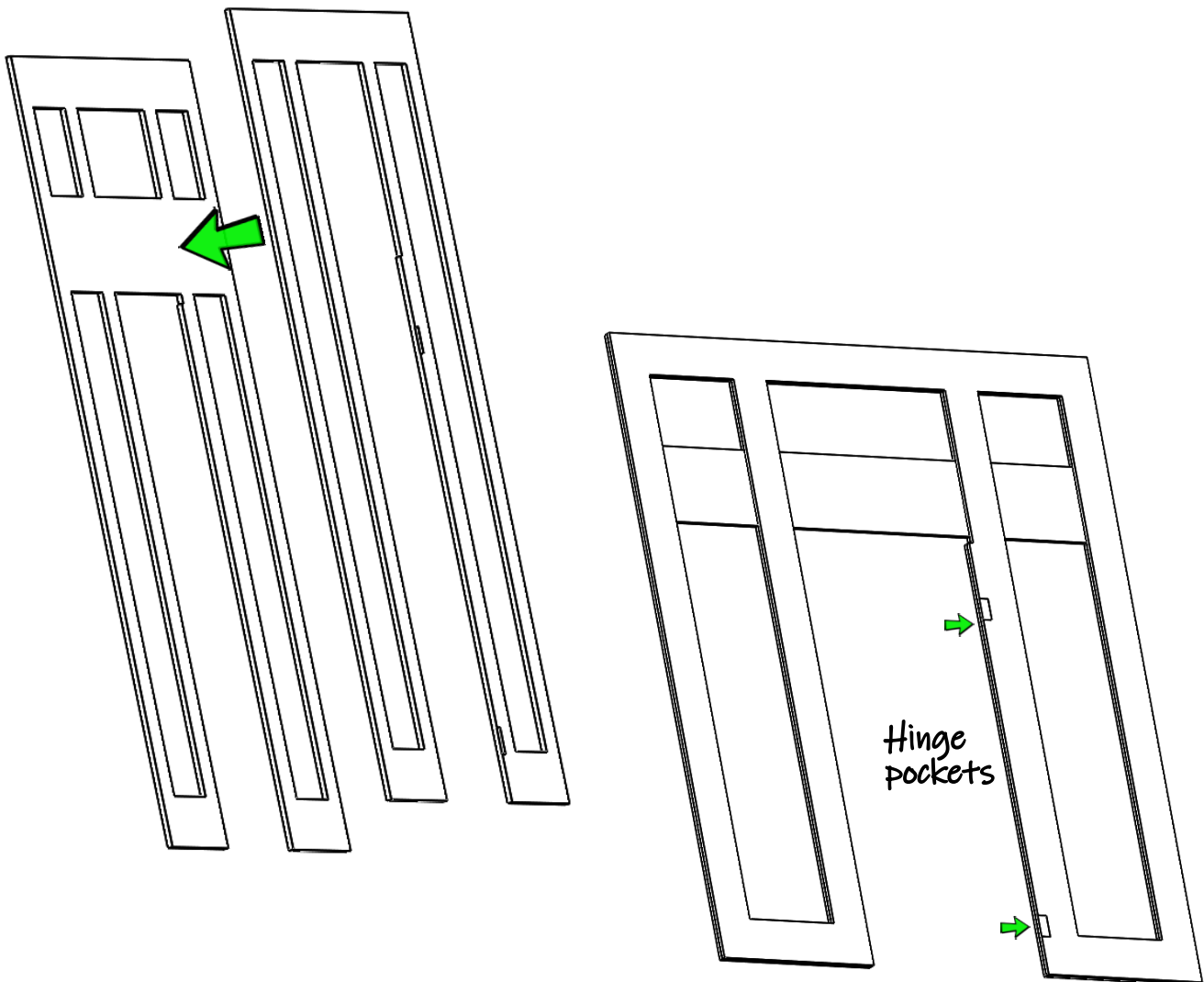
We're excited to see your Book Nook Story!
Use hashtag [#RPFAB](https://www.facebook.com/groups/booknooks) and join our Facebook page so that we can support your work.
<https://www.facebook.com/groups/booknooks>



RPFAB Doll House Kit Assembly Guide - Library Hidden Door (LBH)

Revised 8/9/2021
Page 3 of 12

Glue the two main frames together. Note how the notch and hinge pockets are aligned and the hinge pockets face up. Recommend applying glue to the back side of the top panel. Use a dozen clothes pins to clamp the parts together and ensure it is flat to dry. Set this aside to dry. NOTE: Do not install the front trim yet!



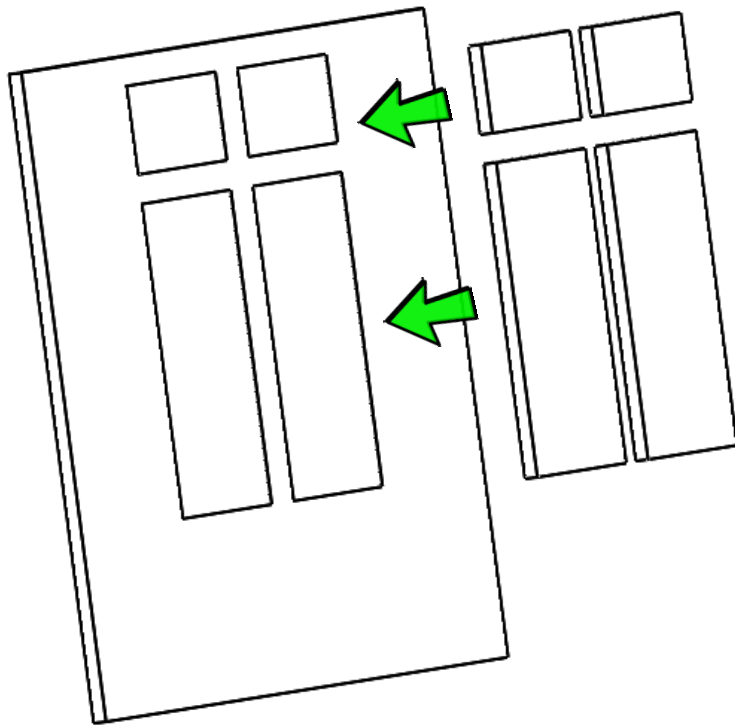
We're excited to see your Book Nook Story!
Use hashtag #RPFAB and join our facebook page so that we can support your work.
<https://www.facebook.com/groups/booknooks>



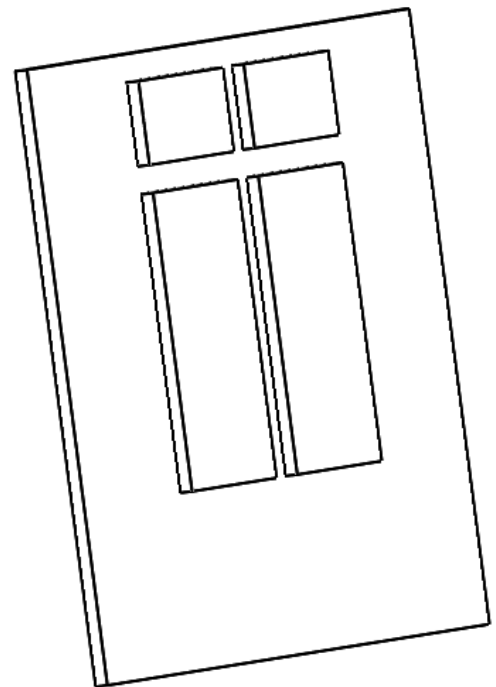
RPFAB Doll House Kit Assembly Guide - Library Hidden Door (LBH)

Revised 8/9/2021
Page 4 of 12

Accurately align the drawers and cabinet faces to the cabinet face. Glue in place so that the parts are square and aligned. Set aside to dry.



Make x2 sets



We're excited to see your Book Nook Story!
Use hashtag [#RPFAB](#) and join our Facebook page so that we can support your work.
<https://www.facebook.com/groups/booknooks>

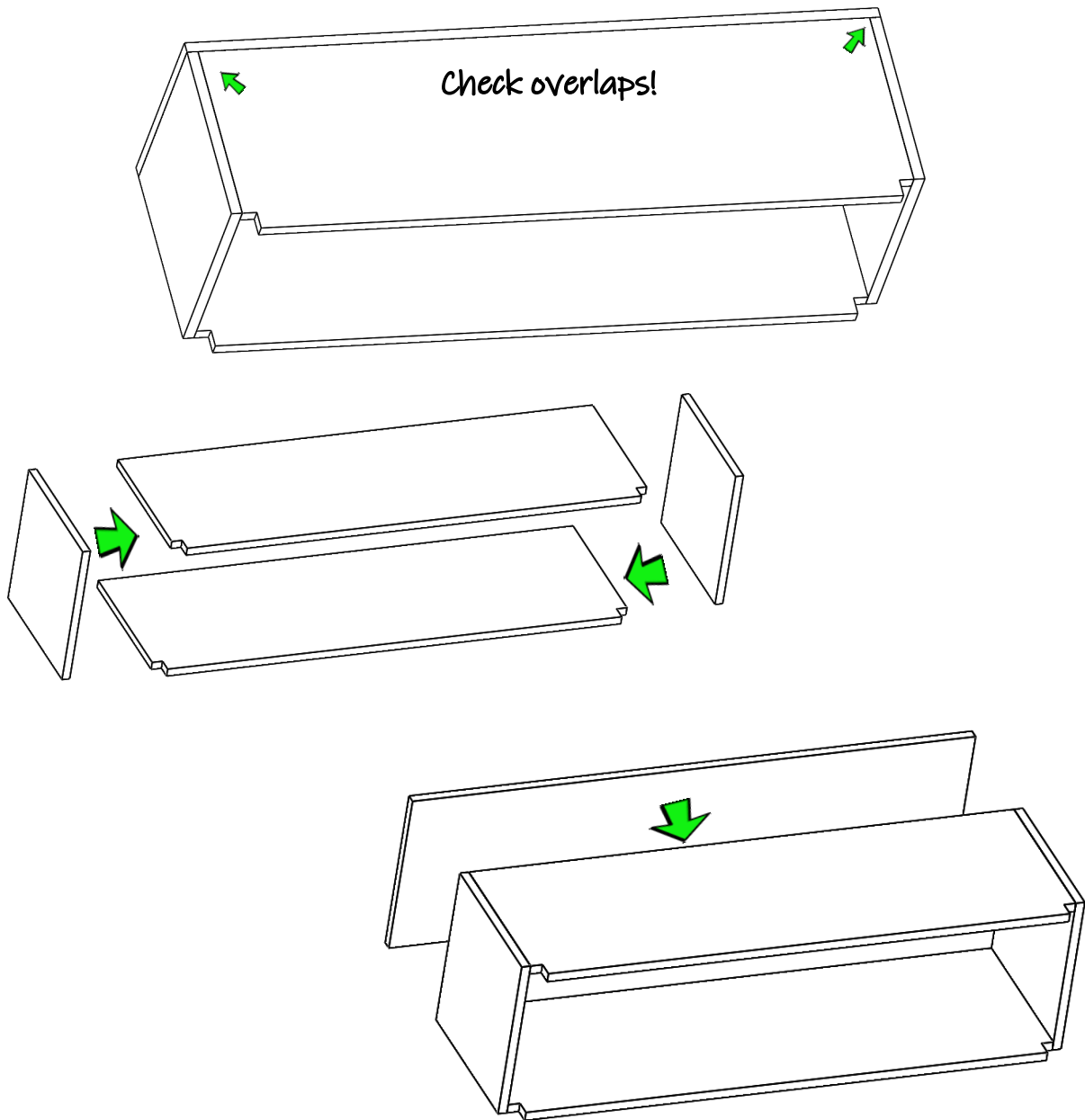


RPFAB Doll House Kit Assembly Guide - Library Hidden Door (LBH)

Revised 8/9/2021
Page 5 of 12

Now we'll assemble the top center shelf. Pay particular attention to the way the corners overlap. This is critical for a good fit to the main frame. Ensure that you have the end caps rotated the correct way and mark the top edge.

Edge glue the panels and use tape to secure each in place. Set aside to dry.



We're excited to see your Book Nook Story!
Use hashtag [#RPFAB](https://www.facebook.com/groups/booknooks) and join our facebook page so that we can support your work.
<https://www.facebook.com/groups/booknooks>

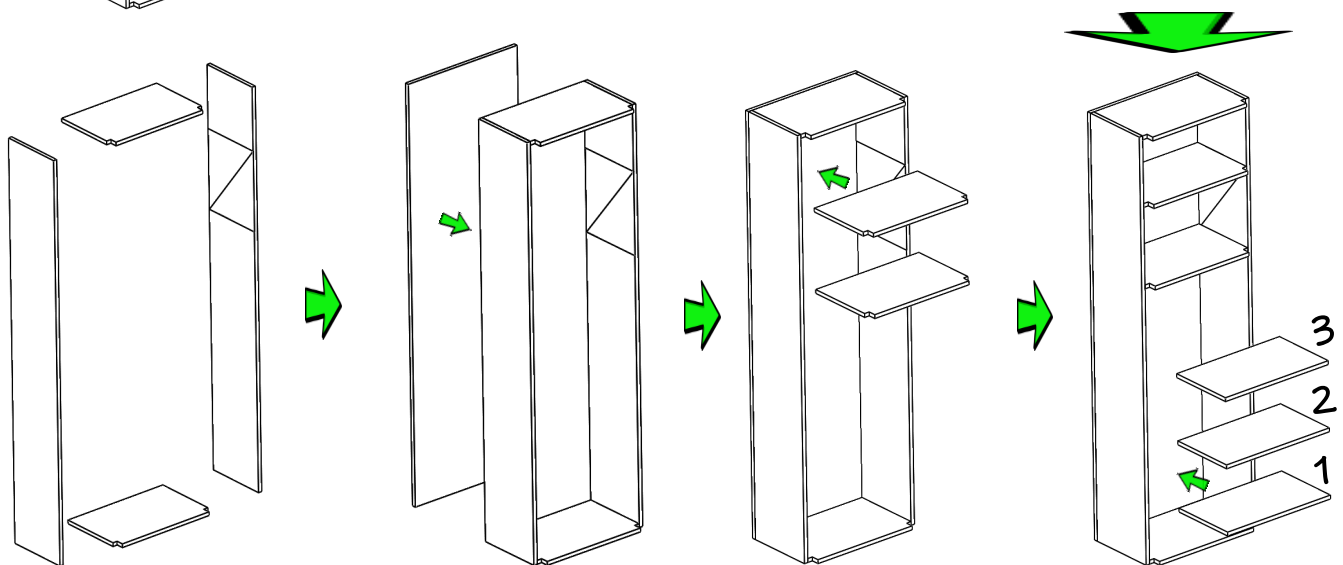
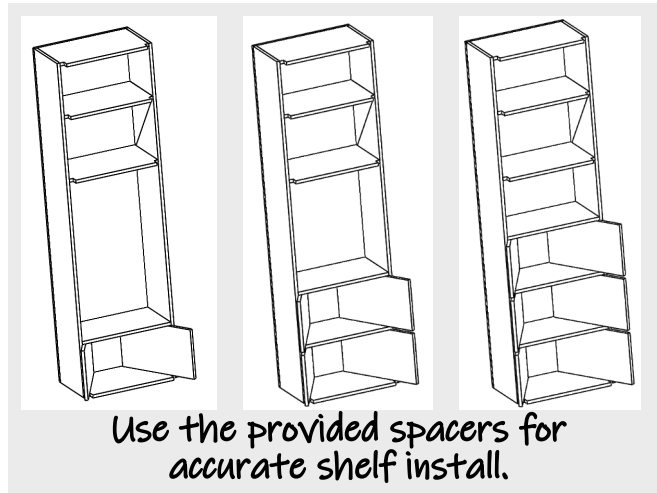
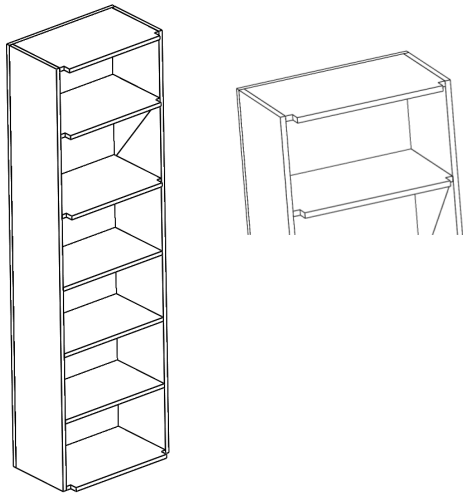


RPFAB Doll House Kit Assembly Guide - Library Hidden Door (LBH)

Revised 8/9/2021
Page 6 of 12

Find and separate the x8 shelves with notches, the 6 rectangle shelves and the spacers marked with "← 24.65 →". Following the previous instructions, assemble the basic box. Use a notched shelf for the top and bottom. Then add two more notched shelves as shown. Align these to the laser marks as accurately as possible (it'll be important in a later step).

Using x3 rectangular shelves and the spacers, start at the bottom. Place a spacer on each side and install a shelf so that the spacer ensures the correct height and keeps it square. You may need to use a rubber band to help squeeze the sides in. Then install the second and third shelf using the same technique. Set aside to dry.



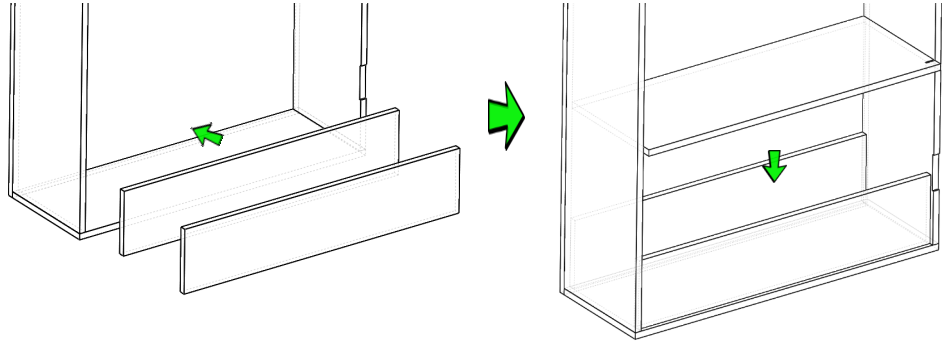
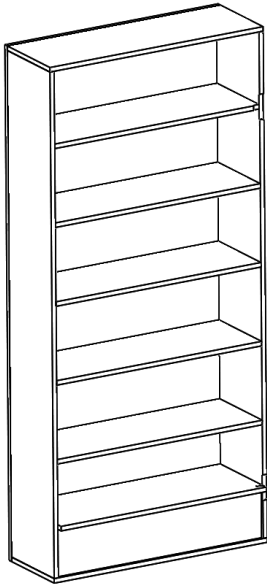
We're excited to see your Book Nook Story!
Use hashtag #RPFAB and join our facebook page so that we can support your work.
<https://www.facebook.com/groups/booknooks>



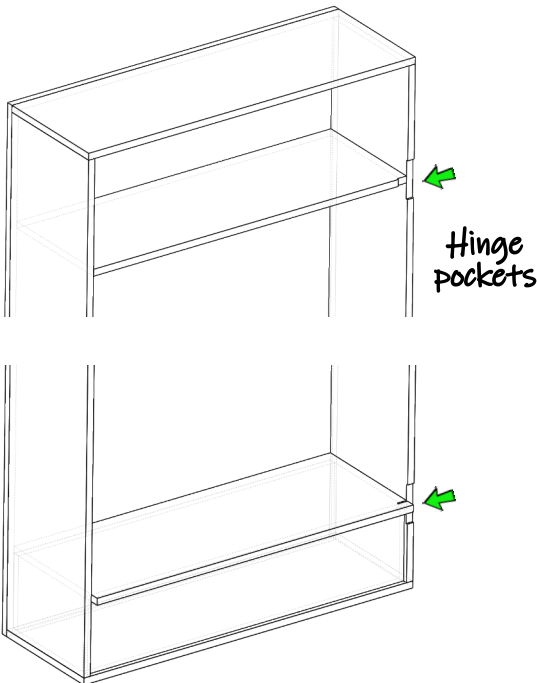
RPFAB Doll House Kit Assembly Guide - Library Hidden Door (LBH)

Revised 8/9/2021
Page 7 of 12

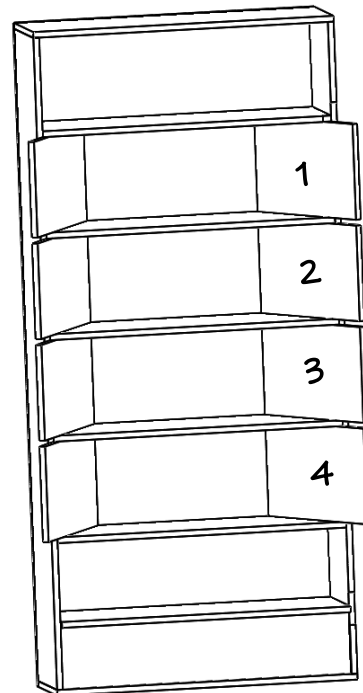
Using your previous experience, assemble the door. Assemble the box frame. Install the support and bottom shelf. Use the provided spacers starting at the TOP and install the shelves working your way down. Take care of the notes below:



Install supports (x2). Add shelf with the narrow notch towards the hinge pocket.



Hinge
pockets



Install
shelves
from
TOP
down!

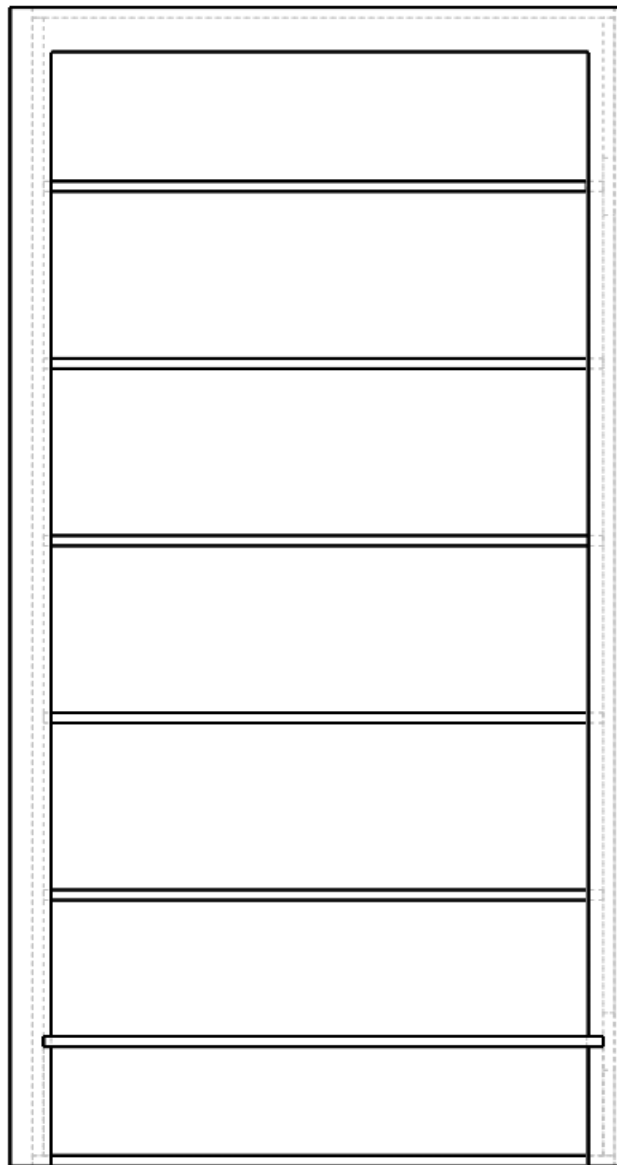
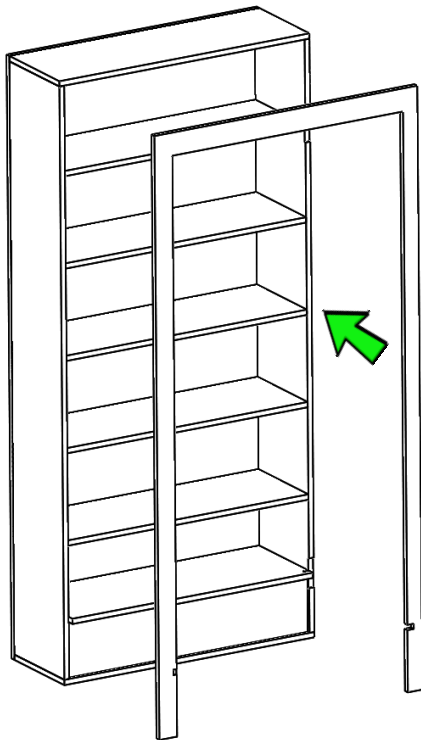
We're excited to see your Book Nook Story!
Use hashtag [#RPFAB](#) and join our facebook page so that we can support your work.
<https://www.facebook.com/groups/booknooks>



RPFAB Doll House Kit Assembly Guide - Library Hidden Door (LBH)

Install the front frame. When installed correctly, the deeper notch will be on the left and the shorter notch will be on the right. See the illustration.

Do not apply glue to the notch areas for the hinge. A small slot **MUST** remain for the hinge to slide into. Set aside to dry.



Hinges will install here in a later step.
←
DO NOT glue these x2 slots!

Hinges will install here in a later step.
←
DO NOT glue these x2 slots!

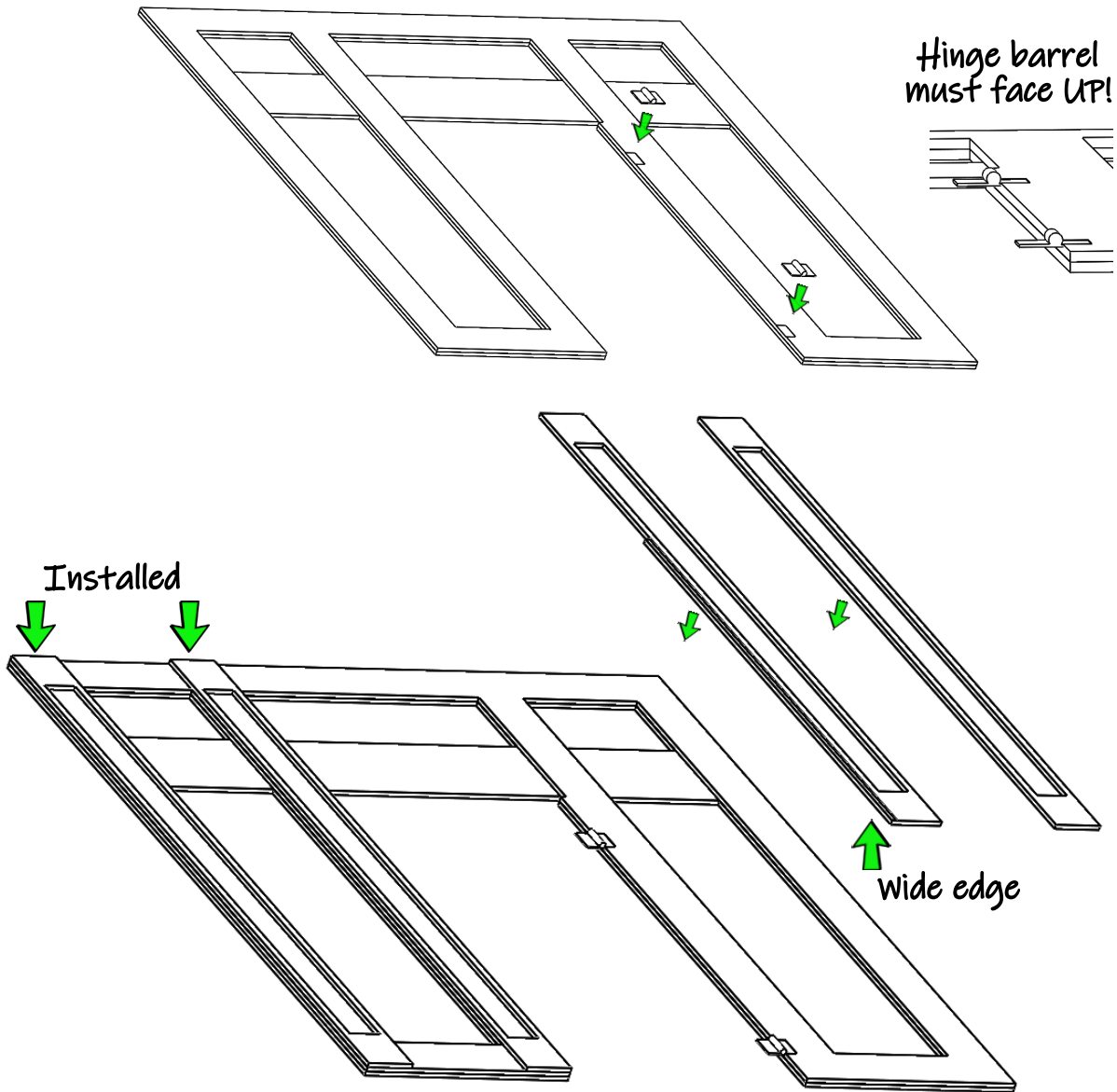
We're excited to see your Book Nook Story!
Use hashtag [#RPFAB](#) and join our facebook page so that we can support your work.
<https://www.facebook.com/groups/booknooks>



RPFAB Doll House Kit Assembly Guide - Library Hidden Door (LBH)

Revised 8/9/2021
Page 9 of 12

Main assembly! Using a stronger glue like EG000, epoxy or THICK superglue, carefully install the x2 hinges to the x2 hinge pockets. Let this dry completely. Then carefully remove any excess glue which is taller than the pocket surface. Install the four thin trim pieces. One of them has a wider edge to conceal the hinge. I prefer to switch back to Tite Bond 2 wood glue for installing the trim.



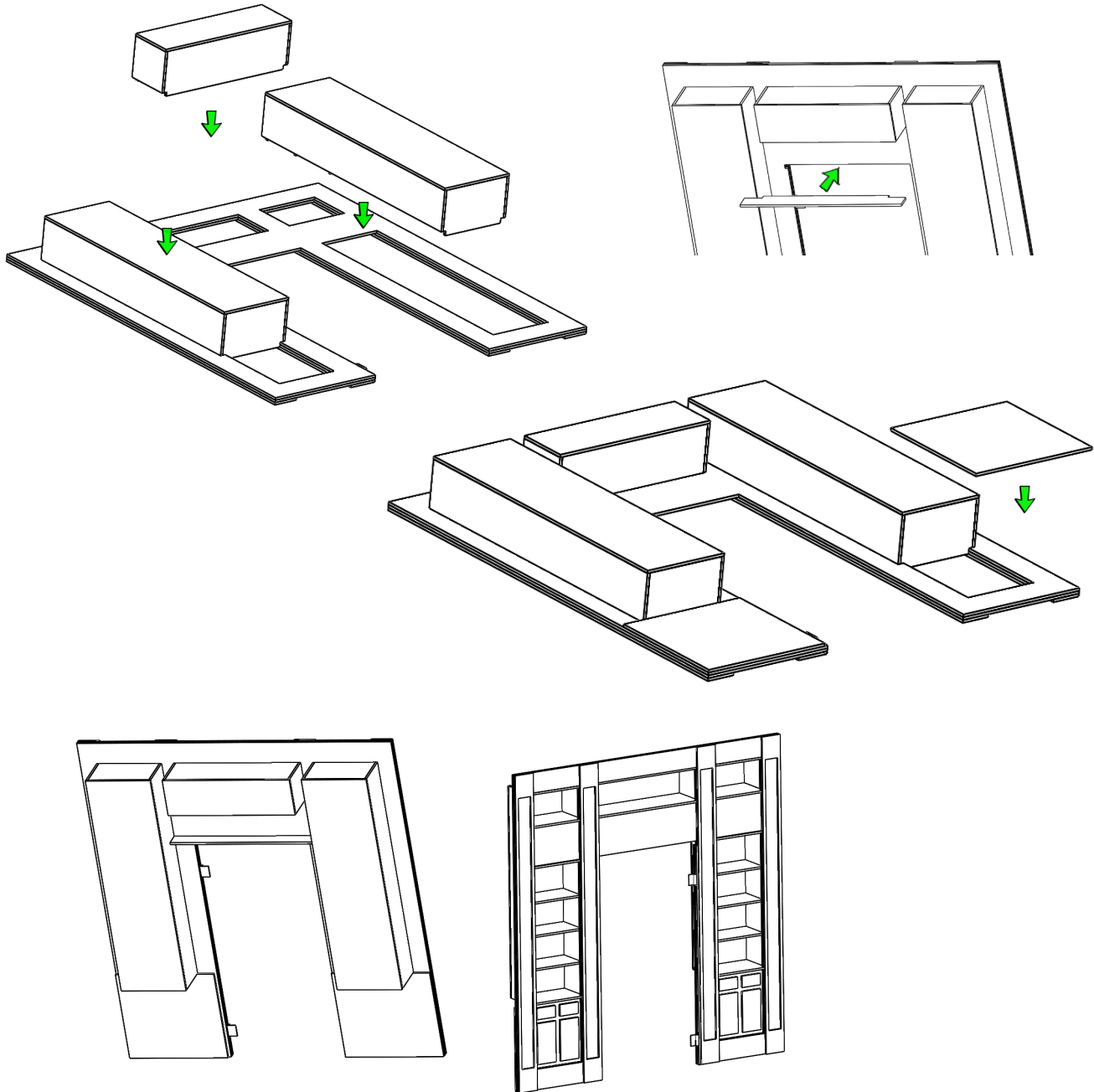
We're excited to see your Book Nook Story!
Use hashtag #RPFAB and join our facebook page so that we can support your work.
<https://www.facebook.com/groups/booknooks>



RPFAB Doll House Kit Assembly Guide - Library Hidden Door (LBH)

Revised 8/9/2021
Page 10 of 12

Flip the main frame over and install the center shelf. The two tabs which stick out should align to the front frame. Repeat for the x2 side shelves. Then install the cabinet on the bottom. Ensure the drawers (small rectangles) are towards the top. Finally, install the small trim piece as shown.



We're excited to see your Book Nook Story!
Use hashtag [#RPFAB](#) and join our facebook page so that we can support your work.
<https://www.facebook.com/groups/booknooks>



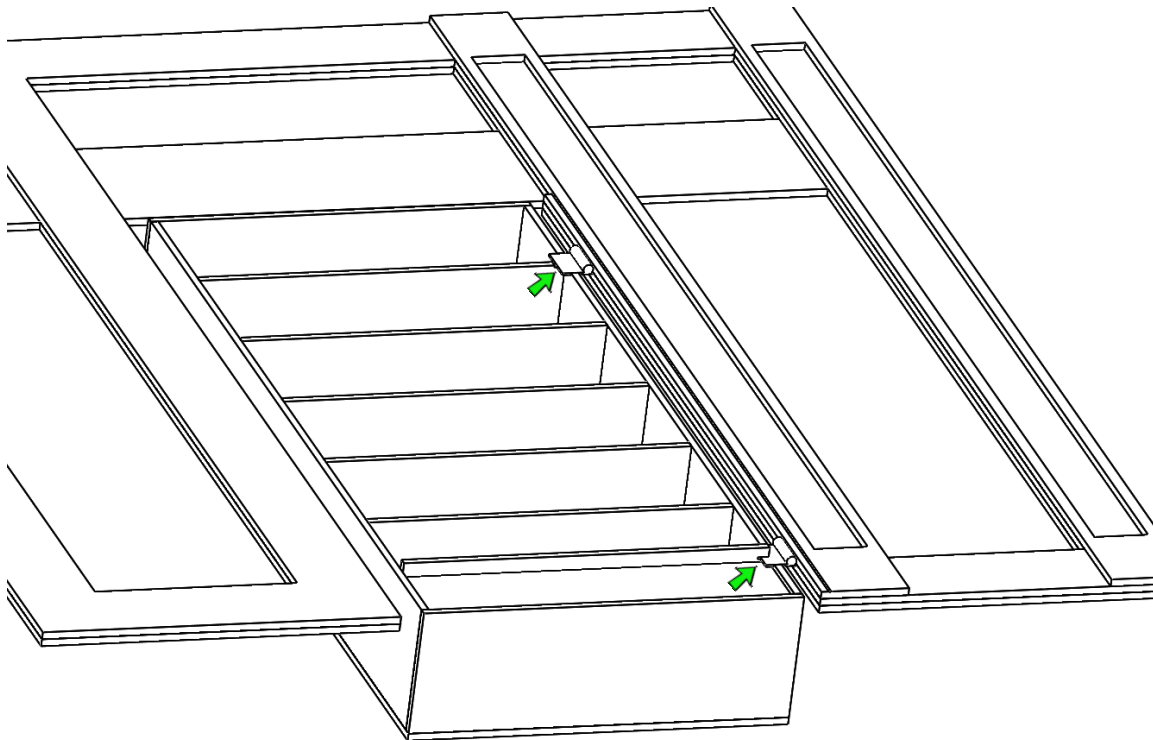
RPFAB Doll House Kit Assembly Guide - Library Hidden Door (LBH)

Revised 8/9/2021
Page 11 of 12

Last step is the door! I include a third hinge. Use it to test your door slots and make sure the hinge will go in properly. If all looks good:

Apply a small amount of EG000, Epoxy or THICK superglue to the door slots. Wipe away the extra to avoid getting any into the barrel of the hinge. Slide each hinge into the slots and fix the door in place so that the glue can dry. Once dry, test the door movement. If all is good, I like to bend a wire into a "J" shape and apply some extra glue to the back side of the hinges inside the door shelf area.

NOTE: Some parts omitted for clarity.

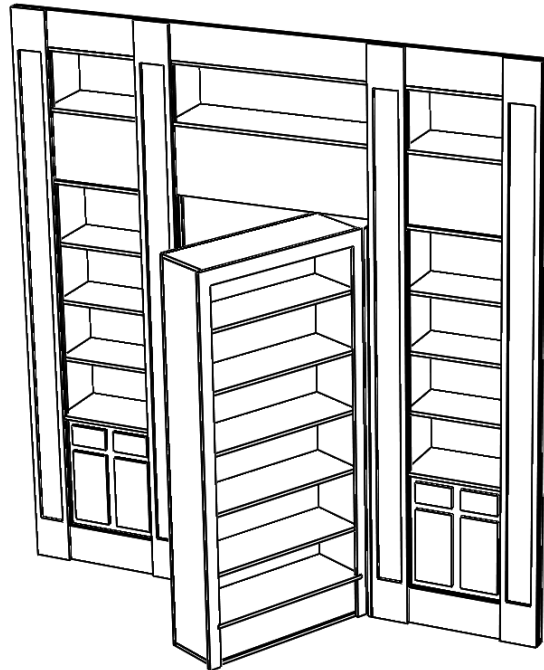
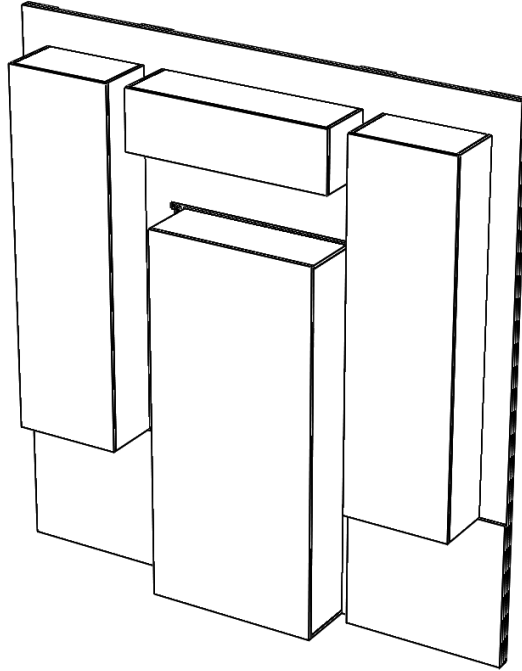
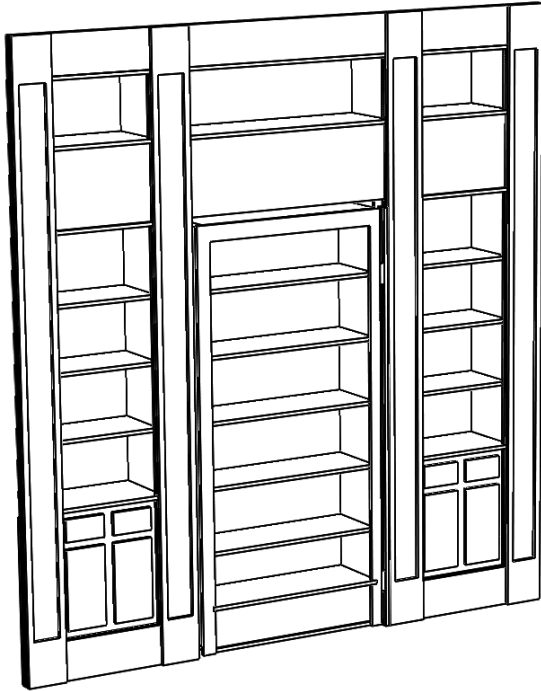


We're excited to see your Book Nook Story!
Use hashtag #RPFAB and join our facebook page so that we can support your work.
<https://www.facebook.com/groups/booknooks>



RPFAB Doll House Kit Assembly Guide - Library Hidden Door (LBH)

Revised 8/9/2021
Page 12 of 12



We're excited to see your Book Nook Story!
Use hashtag [#RPFAB](#) and join our facebook page so that we can support your work.
<https://www.facebook.com/groups/booknooks>